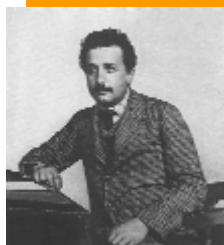


Library News

June 2006



D. SAMUEL GOTTESMAN LIBRARY —

Judie Malamud, Director

ALBERT EINSTEIN COLLEGE OF MEDICINE OF YESHIVA UNIVERSITY

<http://library.aecom.yu.edu/library/news/newsletter.htm>

LIBRARY RENOVATION UPDATE

The Library is about to begin a one-year renovation of its main floor. The renovation will have three phases:

- **Harry H. Beren Center for Information Technology** will continue to have computers. In addition, it will become a space accessible for 24-hour study, computer use, and quiet conversation
- **Reading Room** will be reconfigured with a combination of carrels, study tables, a quiet room, five group study rooms, and leisure seating
- **Reference/Circulation** area will be streamlined with a combined service desk, photocopy/print corner, and quick reference computer stations

To prepare for the Beren Center upgrade, indexes and abstracts have been moved to the upper and lower stacks.

On the mornings of June 7, 8, and 9, Library, MIS and RIT staff will be moving computers to temporary locations on other parts of the Library's main floor. Renovations will start on June 12.

To keep track of the renovation's progress, check the Library's Renovation Web page at <http://library.aecom.yu.edu/library/renovation.htm>.

UpToDate NOW AVAILABLE

UpToDate, the online clinical information resource, is now available on campus from the Library's Web site. To access it, click on the Databases link and scroll down through the alphabetical list. UpToDate is not available by remote access.

COMING IN JULY

The Library will be offering access to the *ISI Web of Science*, which includes *Current Contents* (currently available) and *Science Citation Index* (at present available via the "Free Trials and Demos" link on our homepage). *Science Citation Index* is a multidisciplinary index to the journal literature of the sciences. It fully indexes 5,900 major journals across 150 scientific disciplines and provides cited reference searching. Our subscription will cover 2001 to the present.

ONLINE FUNDING DIRECTORY FOR GLOBAL HEALTH SCIENCES

The Fogarty International Center, the international component of the National Institutes of Health, addresses global health issues through research and training programs and participates in international partnerships to foster research and improve health. Since 1988, the Center has published the *Directory of International Grants and Fellowships in the Health Sciences*, a comprehensive compilation of international funding opportunities in biomedical and behavioral research. It is available online at http://www.fic.nih.gov/funding/directory_fellowships.htm. An RSS feed is also available.

AGRICOLA

AGRICOLA, the online database of the National Agricultural Library, encompasses all aspects of agriculture and allied disciplines, including animal and veterinary sciences, food and human nutrition, aquaculture and fisheries, entomology, plant sciences, and others. The database includes the Online Public Access Catalog, which contains citations to books, audiovisuals, serials, and other materials and the Article Citation Database, which contains citations, many with abstracts, to journal articles, book chapters, reports, and reprints. Both data sets are updated daily. Four different search options are available; links for help on using the various options are available at <http://agricola.nal.usda.gov/help/faq.html>.

HOURS — June/July

Monday - Thursday
8:30am - midnight
Friday
8:30am - 5pm
Saturday
Closed
Sunday
10:30am - midnight

July Holiday Hours
Independence Day, Tuesday, July 4
CLOSED

LIBRARY CLASSES—June/July

Classes are held in the Library Conference Room. To register, call x3104 or send email to askref@aecom.yu.edu

Library 101
Thursday, July 20, 1:00 - 2:00pm

Endnote
Tuesday, June 6, 10:00am - 12pm

Introduction to Ovid Web
Tuesday, June 13, 12:00 - 1:00pm

Ovid Web Medline
Tuesday, June 20, 12:00 - 1:00pm

Reference Manager
Tuesday, July 11, 10:00am - 12:00pm

PubMed
Thursday, July 13, 1:00 - 2:00pm

LIBRARY DIRECTORY

Administration.....718.430.3108
Archives.....718.430.3086
Cataloging.....718.430.3114
Circulation Desk/Renewals.....718.430.3111
e-mail circdesk@aecom.yu.edu
Interlibrary Loan.....718.430.3122
e-mail.....interlibraryloan@aecom.yu.edu
MEDLINE/PsycINFO/Other Databases
Help via e-mail ... askref@aecom.yu.edu
Periodicals.....718.430.3110/3113
e-mail journals@aecom.yu.edu
Reference Desk.....718.430.3104
e-mailaskref@aecom.yu.edu
Web site.....http://library.aecom.yu.edu

Newsletter contributors: Judie Malamud, Racheline Habousha, Karen Laul, Aurelia Minuti, Rachel Schwartz, Karen Sorensen

NEW DATABASE ON DRUGS AND BREASTFEEDING

LactMed (<http://toxnet.nlm.nih.gov/cgi-bin/sis/htmlgen?LACT>), an online database with information on drugs and lactation, is one of the newest additions to the National Library of Medicine's TOXNET system, a Web-based collection of resources covering toxicology, chemical safety, and environmental health. Geared to the healthcare practitioner and nursing mother, LactMed contains over 450 drug records. It includes information such as maternal levels in breast milk, infant levels in blood, potential effects on breastfeeding infants and on lactation itself, the American Academy of Pediatrics category indicating the level of compatibility of the drug with breastfeeding, and alternate drugs to consider. References are included, as is nomenclature information, such as the drug's Chemical Abstract Service's (CAS) Registry number and its broad drug class.

NEW BOOKS

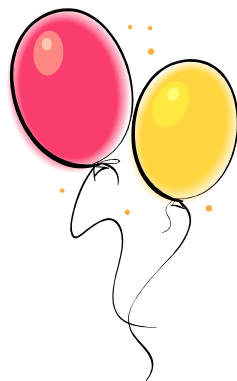
The Library's New Books truck resides outside the Beren Center for Information Technology. Newly processed books stay on the truck for two weeks. If you are interested in borrowing a new book, put your name on the slip in the book and you will be notified when the book is ready to be circulated. Listed below are samples of recent acquisitions.

Body Brokers: Inside America's Underground Trade in Human Remains, Annie Cheney, Broadway Books, 2006. *WO 690 C518b 2006*.

Clinical Neurophysiology of Infancy, Childhood, and Adolescence, Gregory L. Holmes, Solomon L. Moshé, H. Royden Jones, Jr., Butterworth-Heinemann/Elsevier, 2006. *WS 340 C641 2006*.

How Doctors Think: Clinical Judgment and the Practice of Medicine, Kathryn Montgomery, Oxford University Press, 2006. *W 61 M787h 2006*.

CONGRATULATIONS TO THE CLASS OF 2006!



If family and friends are in town, send them to the library lobby, where the Commencement Exhibit is now on display.

This year's Commencement Speaker was Dr. Irwin R. Merkatz, Professor and, since 1982, Chairman of the Department of Obstetrics and Women's Health at AECOM and Montefiore, as well as Corporate Vice President for Affiliations for Montefiore.

The exhibit honors the teaching excellence of six Einstein faculty members and five physicians who received Distinguished, Lifetime and Honorary Alumni Awards.

We extend congratulations to everyone on their graduation, and wish you success in the years ahead.